

# HUNTER-WOLFF GALLERY

May 2013 Insider News

Hunter-Wolff Gallery

2510 W. Colorado Ave  
Colorado Springs, CO 80904  
719.520.9494

[staff@hunterwolffgallery.com](mailto:staff@hunterwolffgallery.com)

[hunterwolffgallery.com](http://hunterwolffgallery.com)

©2013 copyright Sharon Wolff. To copy this material to other publications or mailing lists, please request permission



Landscape & Wildlife Oils by David William Ridge

## New Introductions

At the end of each year, Hunter-Wolff Gallery spends considerable time revisiting experiences and reviewing patron's feedback. Without feedback we cannot improve; we would be frozen in time unable to advance. Some of the feedback helps us plan for a better year, making changes to exhibits and collections. We often make change regarding styles, sizes, and even artists who might be a better fit based on your interests. We listen to every comment—and *listen* just as hard when we hear no comments.

Hunter-Wolff Gallery doesn't send out formal surveys, but I think it is important to provide my feedback when I get one. It makes a difference and if a business takes the time to ask for your feedback why not give it freely and honestly?

As we move into the second quarter of 2013, and because we listened to your feedback, Hunter-Wolff Gallery is delighted to announce several new Colorado artists now on display. The additions of Pamela Poll, David William Ridge and Justin Clements are the result of your interests. We noted the growing interest in smaller—even miniature—paintings and found [Pamela Poll](#) to fit that interest. Pamela is a prolific artist and has an impressive pedigree to back her career. I look forward to hearing your comments and seeing collectors scoop up her work. We also noted a continued, strong interest in realism, particularly Colorado landscapes. The frequent comments related to having options for more affordable, yet quality artwork. There are thousands of exceptional artists who thrill collectors with their realism style. We had no difficulty finding quality, beautiful art. It was challenging, however, to find award-winning art that met all our criteria, but are extremely excited to introduce oils by [David William Range](#) (above). We also added [Justin Clements](#) because he has a wonderful style filled with light and dark contrasts. Check out the simplicity of his still life collection.

Keep your comments coming. It is your input that determines what we do and it is your needs we want to satisfy.

Reminder: Mother's Day is just around the corner on May 12.

She will love having fine art and fine jewelry!

# Big Hits on the LeaderBoard

On behalf of Hunter-Wolff Gallery's artists, once a month we enjoy sending out a special thanks to all those who made art purchases in recent weeks. At the top of the list is Karen from Bossier City, LA for her purchase of "October Fest" by Jeanine Potter; Allen from Colorado Springs for picking "Chimney", a Karen Pierce/Marc Jenesel raku and fiber sculpture; Mr. Steiner for selecting a Janelle Cox oil painting; Don Stump for selecting a 16x12 Janelle Cox painting; Mr. Lien for finding beautiful jewelry for his wife made by Diane Calkins and Tana; Mike & Melissa for picking multiple (6) Donna Gordon glass platters; Heather for choosing her first Mark Wong raku; B. Campbell for selecting a major blown glass sculpture by Donna Gordon; Mr. Bolden in Pennsylvania for finding a glow pot he just loves; Ann and Pete who picked a large John Sherman painting...and more...for their new home; Jerene for loving her new Diane Calkins amazonite necklace; Cheryl for selecting two lovely Donna Gordon glass pieces for wedding gifts; Christine for selecting a small John Sherman painting; Pat in Coco Beach, FL for selecting a gorgeous druzy by Tana; Jon Reisinger for deciding on a Clifford Bailey stylized realism painting; Robert and Stephanie for being the first buyers of two paintings by David Ridge; Valerie for picking Clifford Bailey's still life; Mr. & Mrs. Thompson for buying three Janelle Cox paintings and raku by Mark Wong; Jeff from Santa Monica, for picking a John Sherman painting; Carlos for de-

ciding on the perfect Katherine McNeill painting to hang in his California home; Robert and Debbie for picking Clifford Bailey's landscape oil and more; Denise for opting for layaway for her Pamela Poll "Grapes Ensemble"; and other works of art for gifts and "first time" purchases. Everyone at Hunter-Wolff Gallery appreciates all your decisions and we look forward to seeing you on your next visit.

## Last Call for Entry Art Students



Hunter-Wolff Gallery invites young gifted art students to compete in *Setting the Stage* for prize awards and receive recognition by Hunter-Wolff Gallery and its art jurors. The Awards Ceremony for *Setting the Stage* is scheduled for June 7. Students between the ages of 14 and 22 are eligible to register and submit work for jury selection.

[Registration](#) deadline is **May 15**. [Details](#) are available in a printable .pdf file. Call 719-520-9494 with questions.

### Want to be a Sponsor???

[Sponsor levels and benefits are online](#)

Thank You for your commitments and contribution to the Prize Awards  
[Colorado Springs Style Magazine](#)  
 Crystal Capital Advisors, Todd Crystal  
 Tony & Marcelline Cerato  
 Bankers Life & Casualty, Rick Lien  
[Glaser Frames](#)

### ✓ SAVE THE DATE

*May Schedule: Closed Wednesday*

Friday, May 3 - 5:30 pm - 8:00 pm  
 ArtWalk - New Artist Introductions

Friday, June 7 - 5:30 pm to 8:00 pm  
 Setting the Stage Reception &  
 Awards Ceremony (6 pm)



*On behalf of  
 Hunter-Wolff Gallery and its award-winning artists, Thank You for all your votes!*



# Vibrant



# Pastels

*What does pastel mean to you?* Most people associate the word pastel with delicate colors. The medium pastel, however, refers to what artists use to paint in a stick form. Pastels are available in the full value range (very dark to very light) in every color imaginable. Pastel sticks are made with the same pigments used to make oil paint, but they are mixed with a small amount of gum binder rather than oil. Oil paint tends to yellow or crack with age but not so with pastels. The color stays brilliant.

When painting a still life, [Pamela Poll](#) spends significant time on the set up, and concentrates on placement of objects in order to establish a focal point while taking the viewer's eye around the picture. Every painting gets her full attention to create color harmony and balance. Pamela paints on Wallis brand archival sanded paper. The sanded paper has a rough surface that can grab and hold lots of pastel. She begins with an outline sketch to get the objects placed

correctly in the composition before working the background in because it helps her to judge the values correctly as the painting progresses. On the flower area in the painting below, she first placed a few strokes of pastel color and then brushed over it with rubbing alcohol. This made a pastel wash that filled that area with color. After it dried, she started working the next layer. Like the background, this underpainting helped her to judge values.

Pastel is a very flexible medium. It can be brushed off or erased. It can be blended or layered. Pamela blends colors with her fingers and recommends wearing an old shirt when working with pastel—she says she is constantly wiping the pastel off her fingers onto her shirt. “By the end of a day's work, I am covered in beautiful color!”

When her piece is finished, Pamela then frames her work with museum glass to eliminate glare, protect against UV light rays and preserve your painting for a lifetime!







*Once again, I am proud to announce that a number of Hunter-Wolff Gallery artists have agreed to join me to support an important fundraiser "Memories in the Making" by donating their art to be paired with works created by individuals with Alzheimer's disease for an important cause. This is the third year Hunter-Wolff Gallery has actively participated as a juror and donator of artwork for the Alzheimer's Association.*

[Tickets](#) are available and include cocktails, hors d'oeuvres, and a fabulous art auction which takes place at the Cheyenne Mountain Resort on June 21.

Along with other regional artists, the following artists and staff from Hunter-Wolff Gallery are donating their designer jewelry, photography, paintings and pottery.

Diane Calkins  
Patience Heyl  
Marlene Kort  
Ann Leago  
Kathryn McMahon  
Jeanine Potter  
John Sherman  
Penny Stewart  
Gary Vigen  
Mark Wong

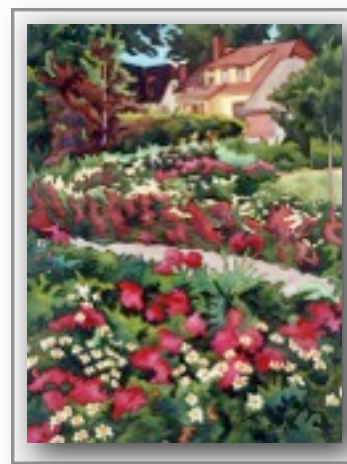
Alzheimer's Association Memories in the Making® is a creative art expression program for individuals with Alzheimer's disease or related dementias. Even after people with dementia have lost the ability to use words, they are often able to express thoughts and emotions and to share memories through painting with watercolors. The experience offers an opportunity for the essence of who they are and what they care about to shine through. Expressive artwork is created by those with memory impairment in more than ninety "Memories in the Making" art classes held weekly throughout the state. A jury of art professionals selects the artwork for the auction and items are

professionally framed for fundraising at the annual Memories in the Making Art Show and Auction.

Your generous bids, toward donations like those shown below, go a long way for research and hopefully a cure for this dreadful disease.



Rockledge Ranch [Kathryn McMahon](#)



Oops-A-Daisy by [Penny Stewart](#)



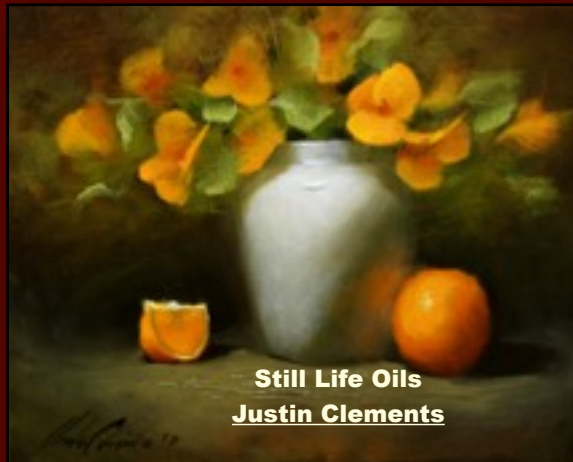
DKC Jewelry by [Diane Calkins](#)

ALZHEIMER'S ASSOCIATION MEMORIES IN THE MAKING - JUNE 21, 5-9 PM



# *New Arrivals:* How Long Can They Last?

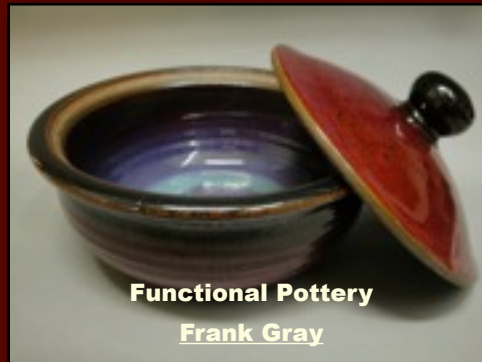
ART COLLECTOR MONTHLY May 2013



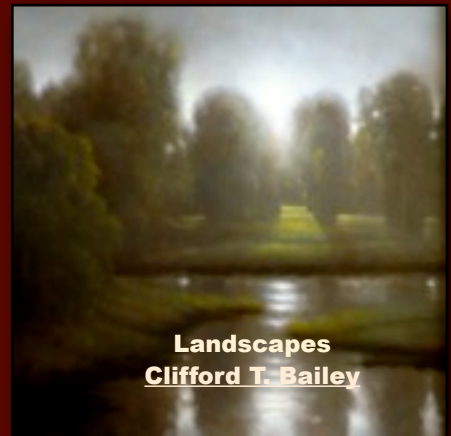
**Still Life Oils**  
**Justin Clements**



**Raku & Fiber Art**  
**Karen Pierce & Marc Jenesel**



**Functional Pottery**  
**Frank Gray**



**Landscapes**  
**Clifford T. Bailey**



**Marine & Waterscapes**  
**Kathryn A. McMahon**



**Pastel Still Life**  
**Pamela Poll**

Be sure to check for new work regularly. [New Gallery Items](#) are highlighted on our website homepage for two full weeks.

